

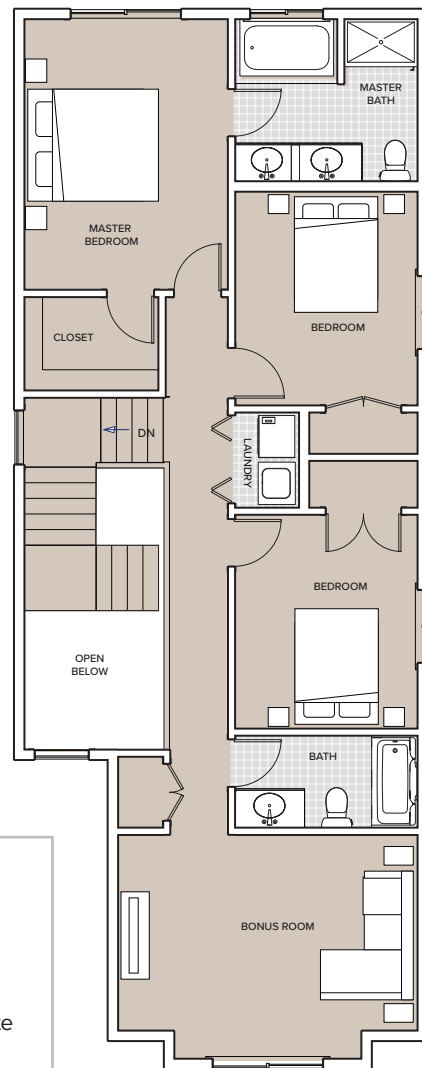
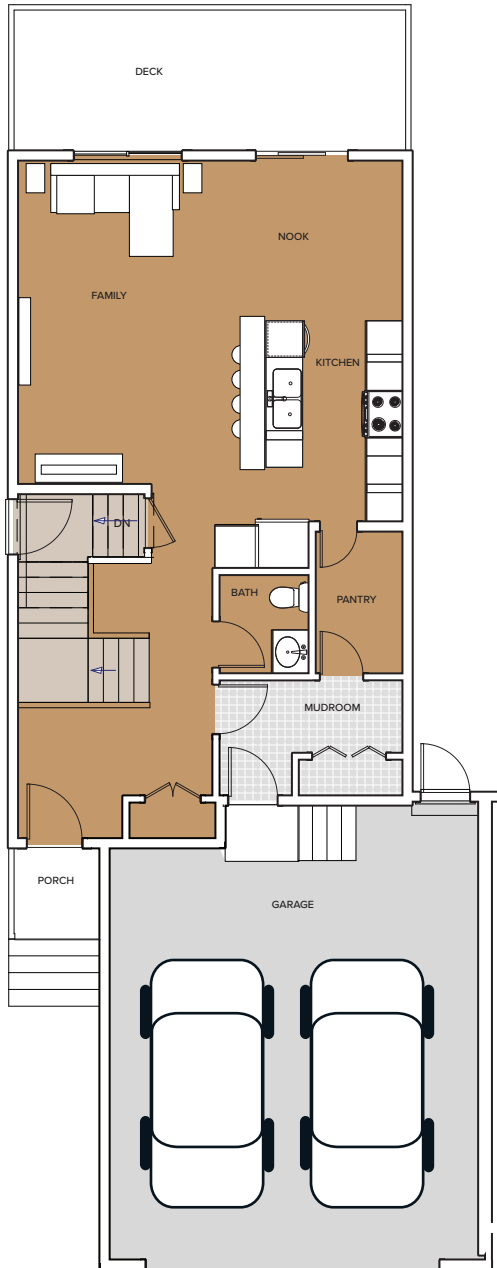


Edgefield
Strathmore





The Ruby III

1,812 sq ft

2 Storey | 3 Bed | 2.5 Bath | Bonus Room | Double Attached Garage



LEGEND

-  Carpet
-  Tile
-  Vinyl /Laminate
-  Concrete

Please note: Elevations & Measurements may change.

A Home as Unique as You.

403.272.6684 | sunviewcustomhomes.ca

